





---

2013

125° 3 33 -125° 4 49 41°

31 -41° 42

1

72 178 287 8 11 11  
1 2 2 63 165 274

Lari x kaempferi



II	Tilia amurensis	II	
Fraxinus	mandschurica	II	
2			
1			
			15
34	124	396	31.31%
Egretta alba	Ardea cinerea	Tadorna	



---

4

1

2

3

47.60

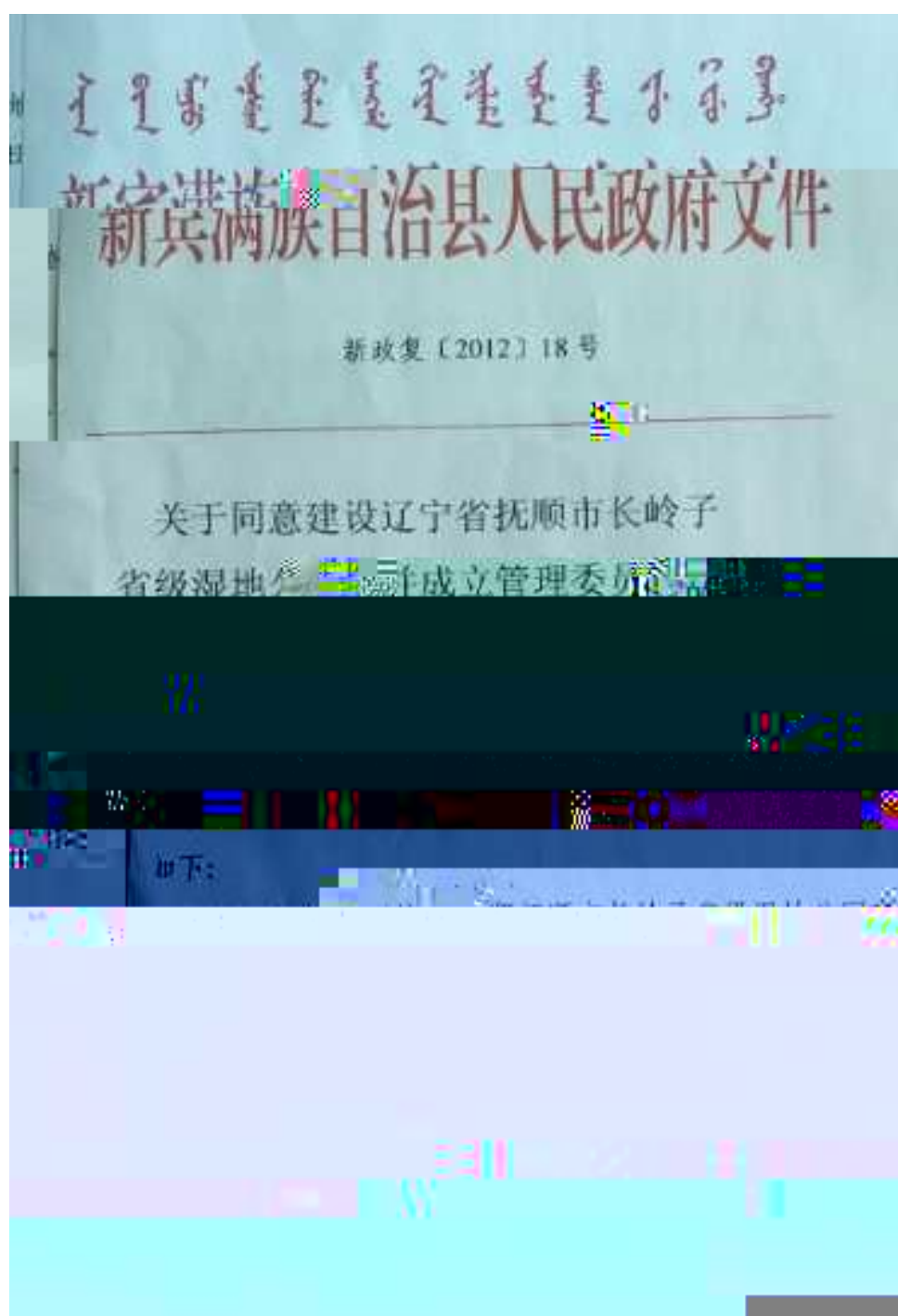
61.70



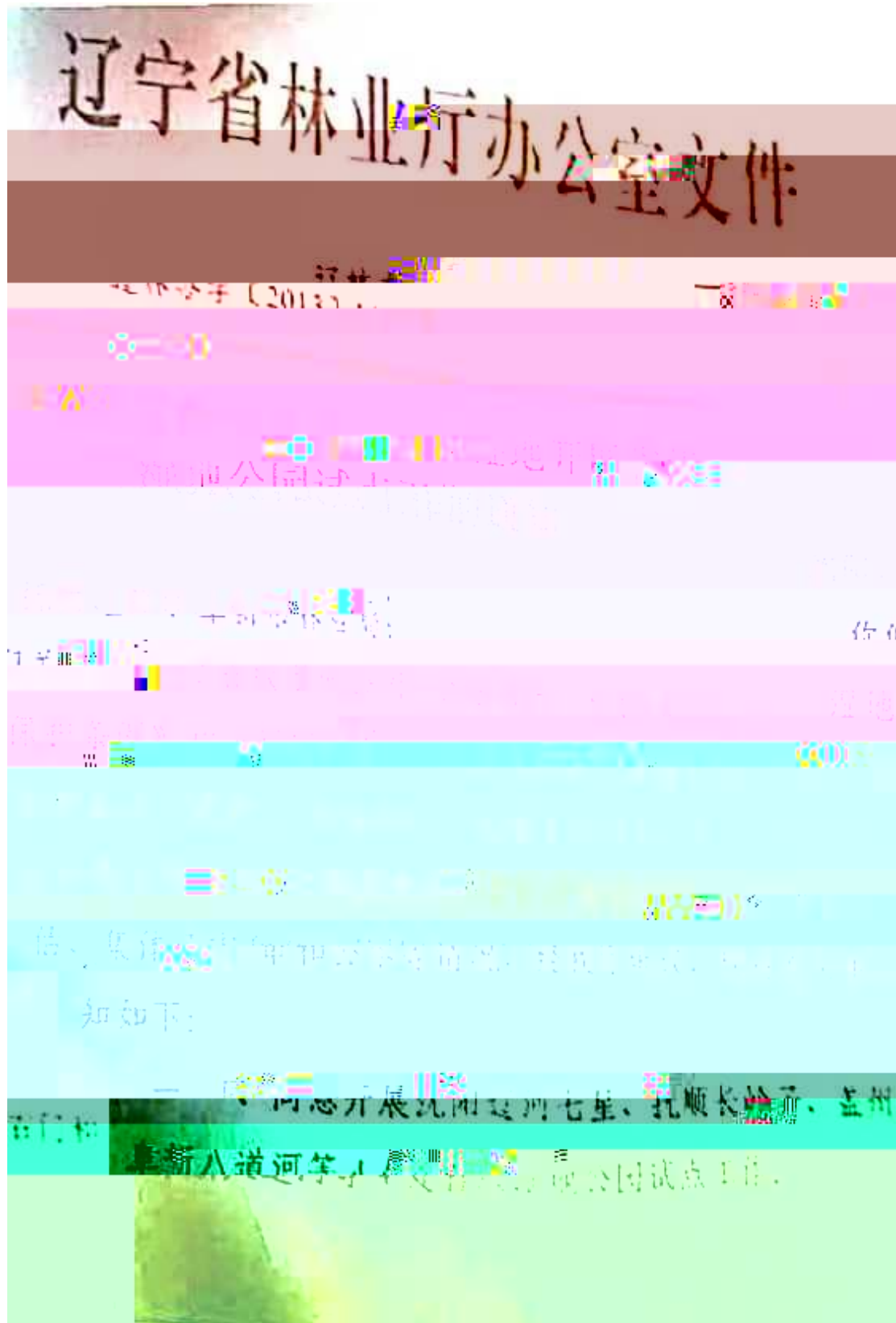


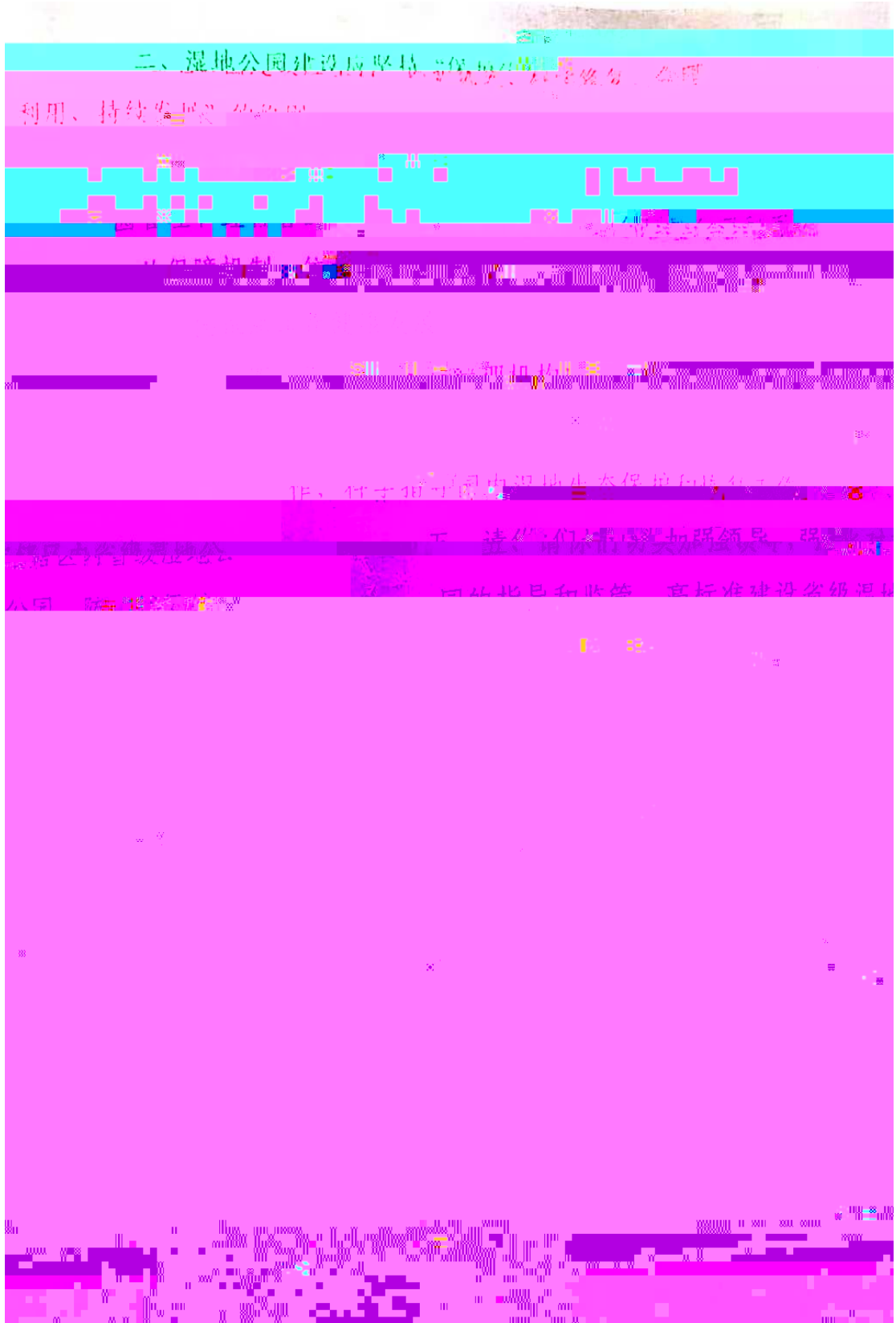


1









---

3

2019

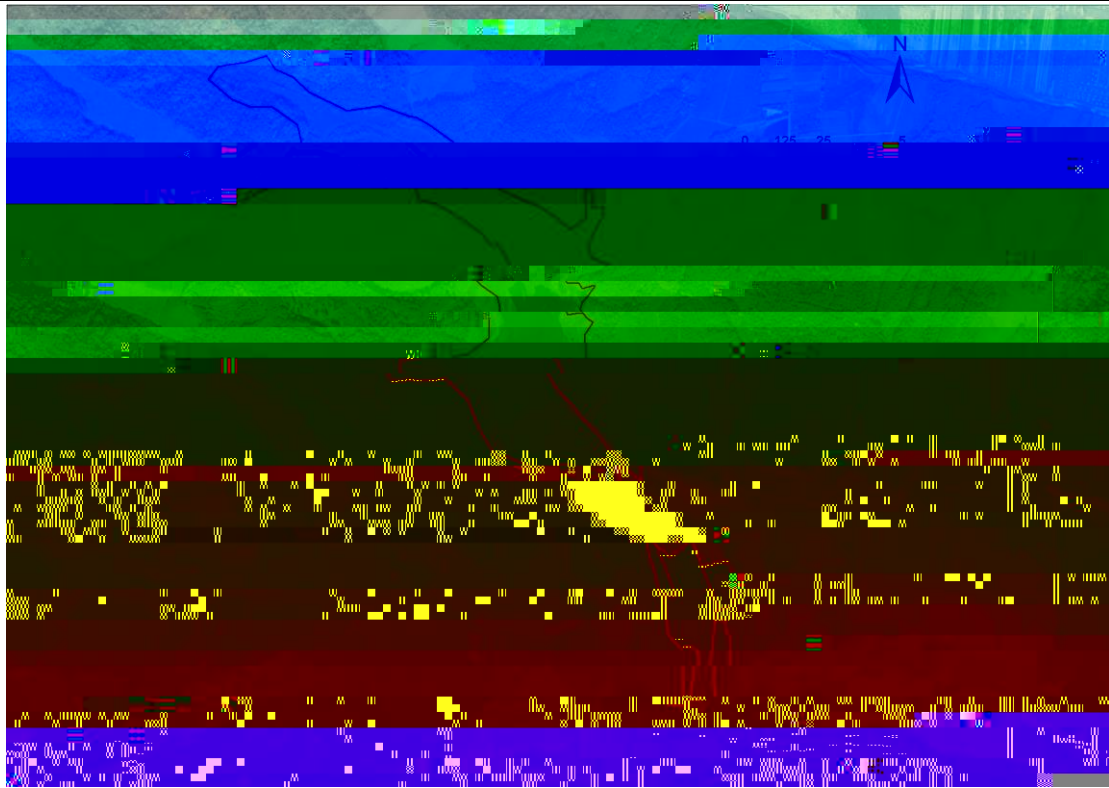
"

"

7.17

---

	/				
TC01			7.17	"	7.17



54.53



